

# MindTelligent, Inc.

*Software Solutions with Mind, Diligence and Intelligence*

**Tel: 1-877-ASK-MIND**

**<mailto:training@MindTelligent.com>**

**Configure CVS repository with  
IBM® Rational® Application Developer  
For  
WebSphere® Software**

## Contents

1. About the author .....	3
2. Introduction .....	4
2.1. Rational® Application Developer for WebSphere .....	4
2.2. What is CVS .....	4
2.3. What is this tutorial about? .....	5
3. Steps Involved .....	6

## 1. About the author

Harvinder Saluja is the Chief Java Architect and Founder of MindTelligent, Inc. He has over 16 years of industry experience and specializes in Java technology, the Java 2 Platform, Enterprise Edition (J2EE), Object-Oriented software design and development, and software patterns.

He currently consults with MindTelligent clients to help architect, design, develop, and deploy Java technology-based enterprise and Web services solutions and speaks regularly at industry conferences. His software architecture and design engagements include several State Agencies and mid to large sized businesses.

Harvinder has authored three courseware books:

- ✓ J2EE Development with J Developer 10g
- ✓ Build J2EE Applications using Oracle 10g AS
- ✓ Object Oriented Analysis and Design With Sparx Enterprise Architect

Harvinder is also involved in conducting J2EE workshops for the Federal and the State agencies. To view the client testimonials for the workshops conducted by Harvinder Saluja, please visit:

<http://www.mindtelligent.com/pdf/J2EEOracleEvals.pdf>

He has contributed to development of plug-ins and extensions for JDeveloper10g, Eclipse and Rational Application Developer for WebSphere Software. These extensions and plug-ins can be downloaded from.

<http://technet.oracle.com/products/jdev/htdocs/partners/addins/exchange/job/content.html>

Harvinder was awarded “JDeveloper Extensions Developer” of the year by Oracle for the year 2003 for plug ins to generate Java Design Pattern code.

<http://www.oracle.com/technology/oramag/oracle/03-nov/o63editorschoice.html#SALUJA>

## 2. Introduction

### 2.1. *Rational® Application Developer for WebSphere*

IBM® Rational® Application Developer for WebSphere® Software helps developers to quickly design, develop, analyze, test, profile and deploy high-quality

- ✓ Web, Service-oriented Architecture (SOA),
- ✓ Java,
- ✓ J2EE and
- ✓ portal applications.

For an on demand world in which software development is a key business process, this tool helps you increase productivity, minimize your learning curve and shorten the development and test cycles.

It includes full support for the J2EE programming model, integrated portal development features, Unified Modeling Language™ (UML™) visual editing capabilities, code analysis functions and automated test and deployment tools.

This powerful tool is optimized for IBM WebSphere software and provides capabilities for deploying to other runtime platforms as well.

### 2.2. *What is CVS*

CVS is a version control system. Using it, you can record the history of your source files.

For example, bugs sometimes creep in when software is modified, and you might not detect the bug until a long time after you make the modification. With CVS, you can easily retrieve old versions to see exactly which change caused the bug

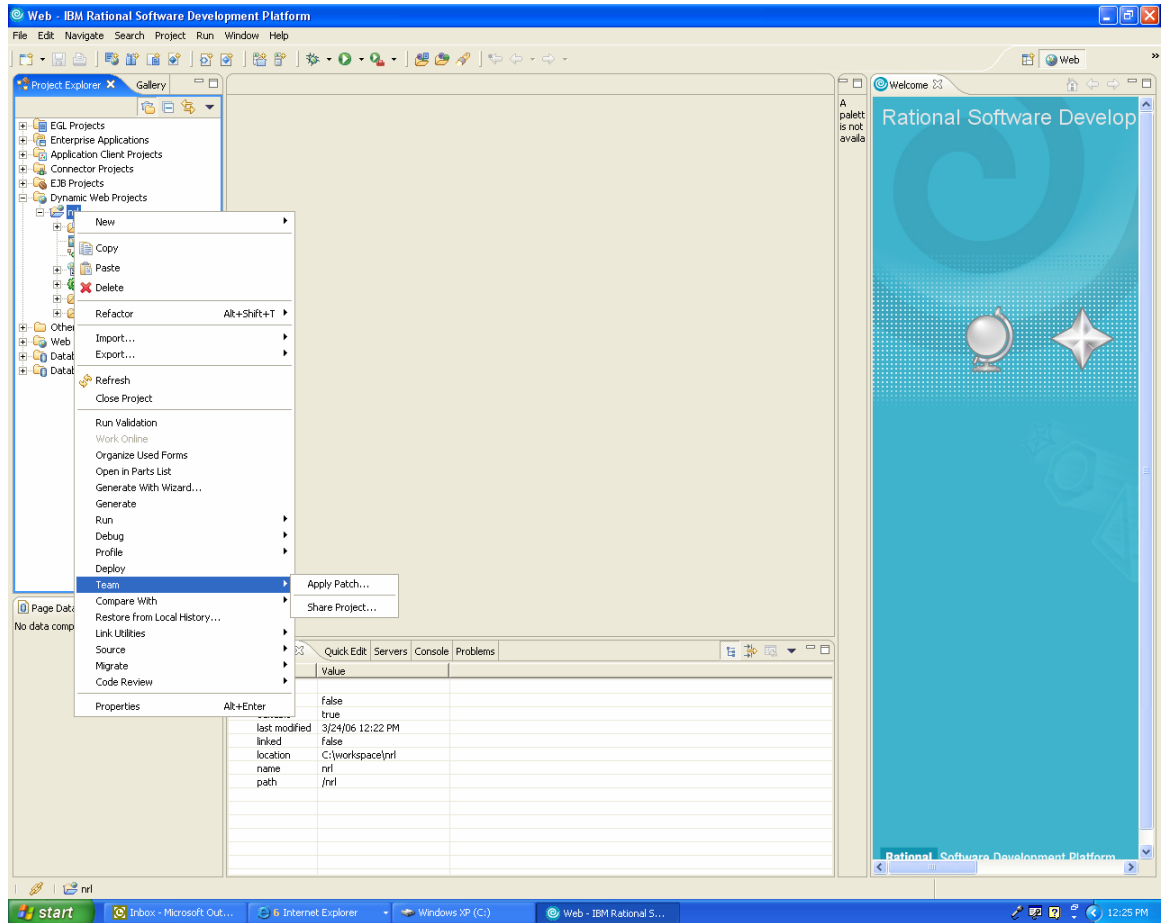
This document focuses on how to configure the CVS with IBM® Rational® Application Developer for WebSphere® Software

### **2.3. *What is this tutorial about?***

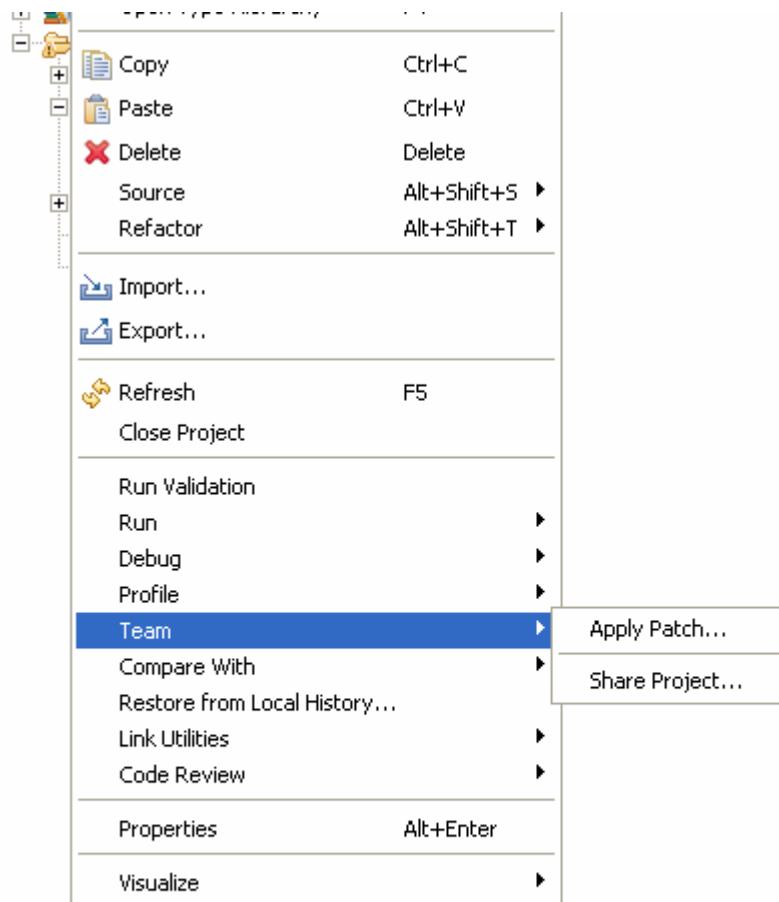
This tutorial discusses steps involved to configuring CVS configuration management with IBM® Rational® Application Developer for WebSphere® Software.

### 3. Steps Involved

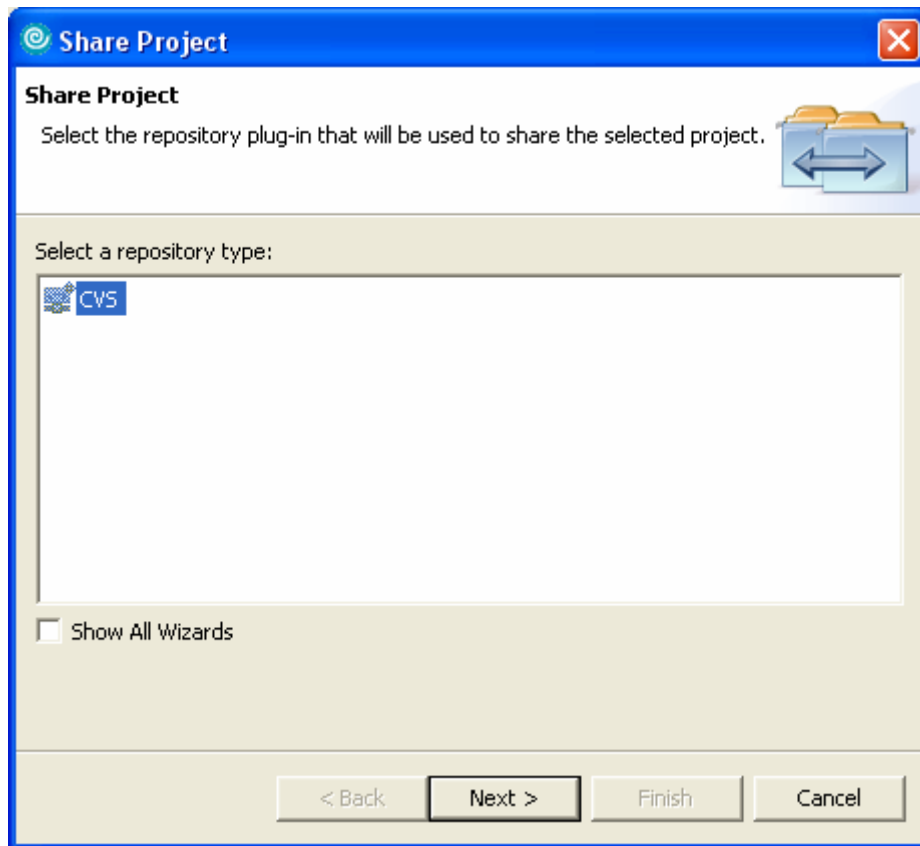
- ✓ Right click on the Project Name
- ✓ Choose the Team icon



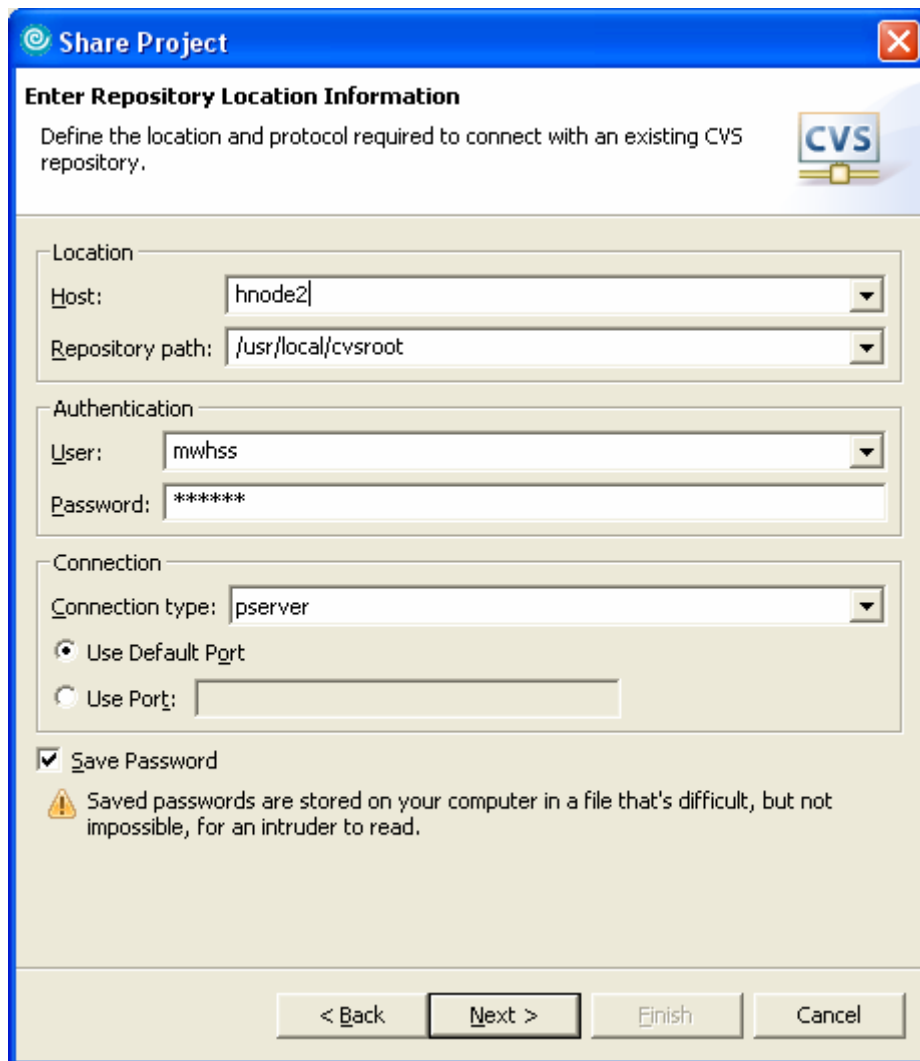
## ✓ Choose Share Project Icon



- ✓ These may be more than one configuration management system, choose CVS, go Next>



- ✓ Verify with the CVS -administrator, the name of the host where CVS is residing, enter the name of the Host :
  
- ✓ Check the Repository Path and enter the path information in the Repository path: Most likely the path will be  
`/usr/local/cvsroot`
  
- ✓ Enter the User and Password information in the User: and Password: fields respectively. This is the user-id and password to log on to the CVS repository.
  
- ✓ The connection type is most likely `pserver`, please verify this information with the CVS administrator and enter the information.
  
- ✓ Select the radio button `Use Default P`o`r`t.
  
- ✓ Check the `Save Password` option and press `Next>`



**Share Project**

**Enter Repository Location Information**

Define the location and protocol required to connect with an existing CVS repository.

**Location**

Host:

Repository path:

**Authentication**

User:

Password:


**Connection**

Connection type:

Use Default Port

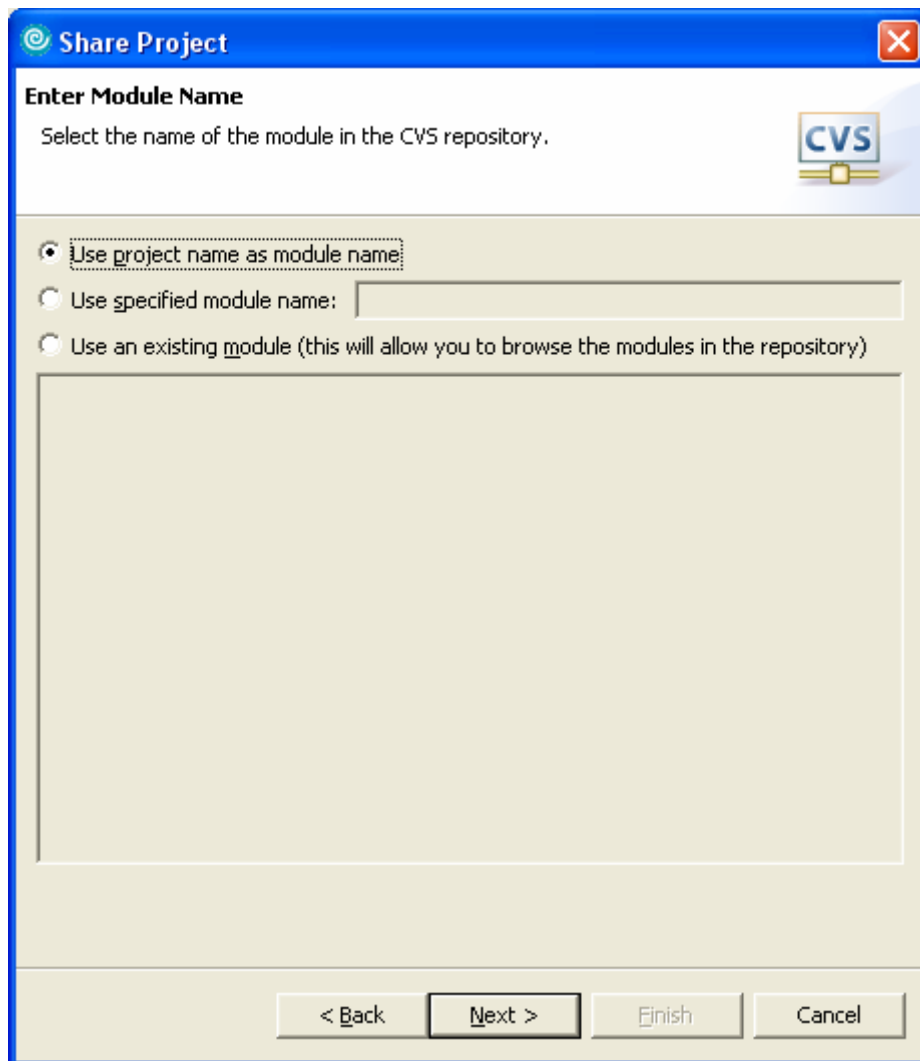
Use Port:

Save Password

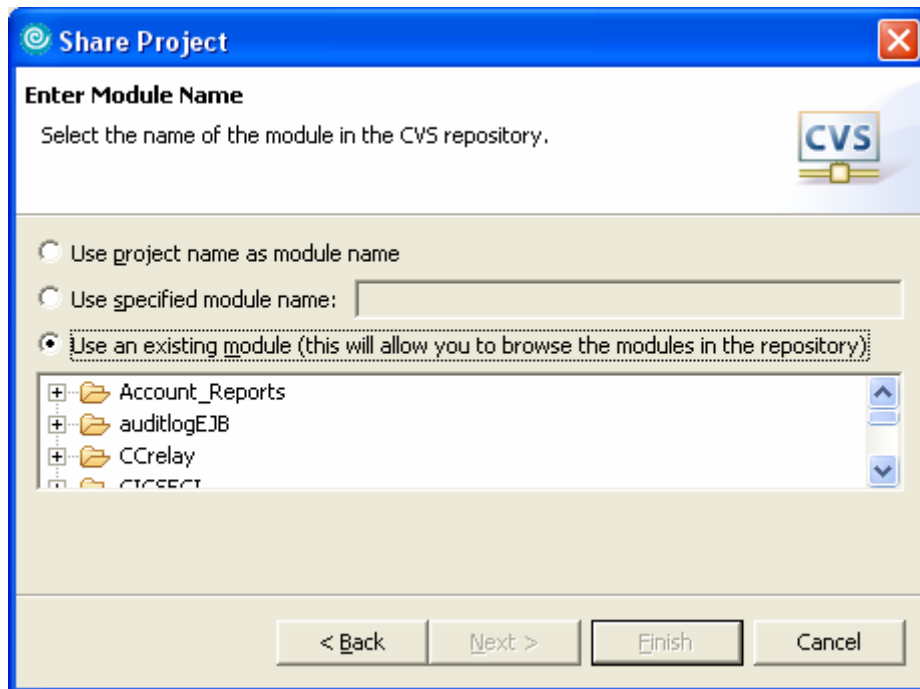
 Saved passwords are stored on your computer in a file that's difficult, but not impossible, for an intruder to read.

< Back   Next >   Finish   Cancel

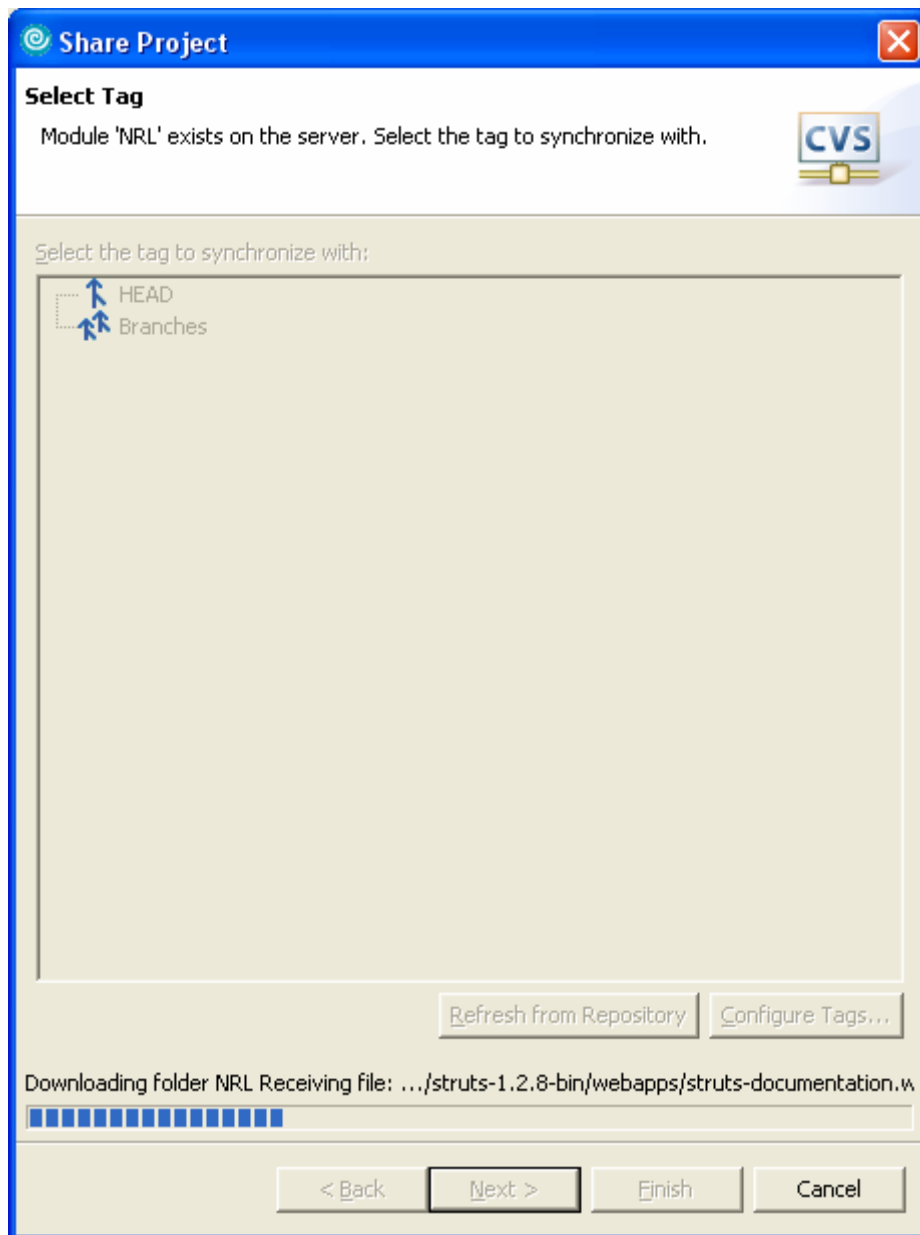
- ✓ To create a brand new project check the radio button  
Use project name as module name



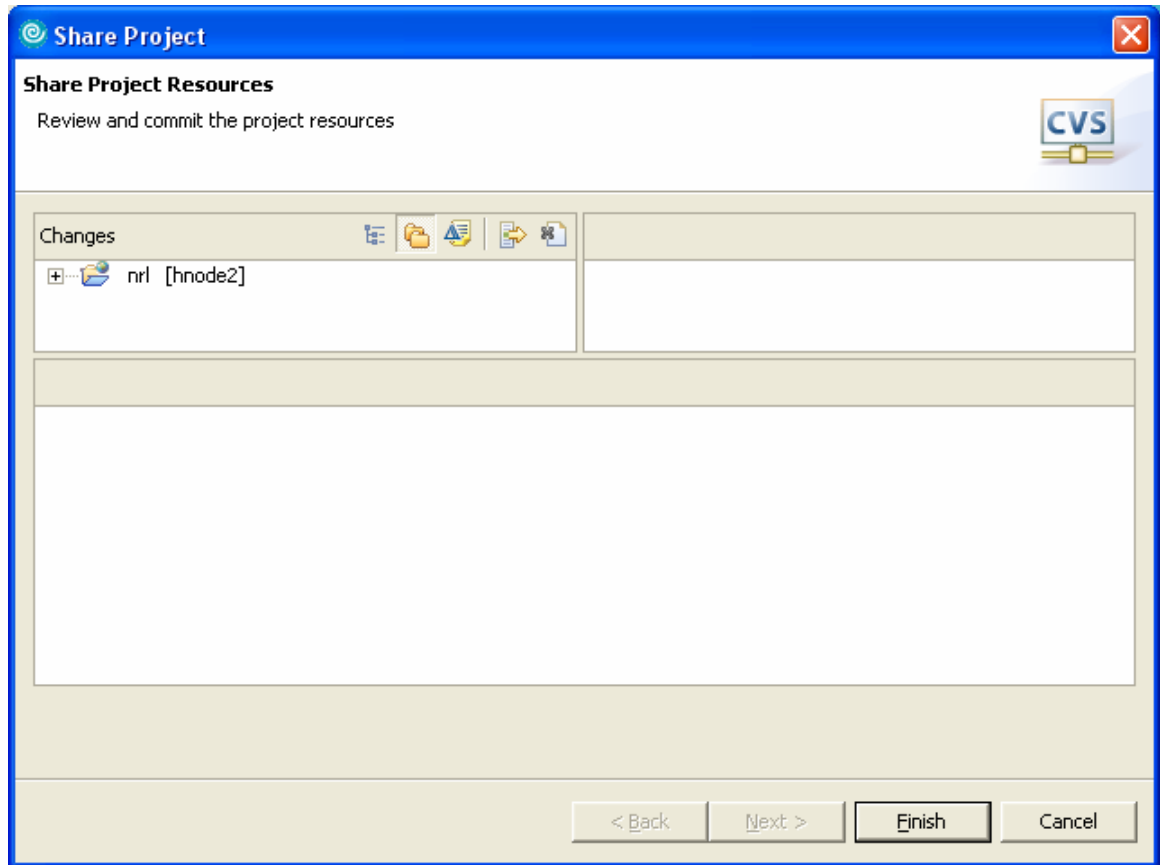
- ✓ Alternatively you may choose Use an existing module, to connect to an existing project.



- ✓ Check the specific branch you want to check out, select HEAD to check out the entire project, select Next>.



- ✓ You may want to review the module.



- ✓ Selecting Yes will commit the changes to the repository.

